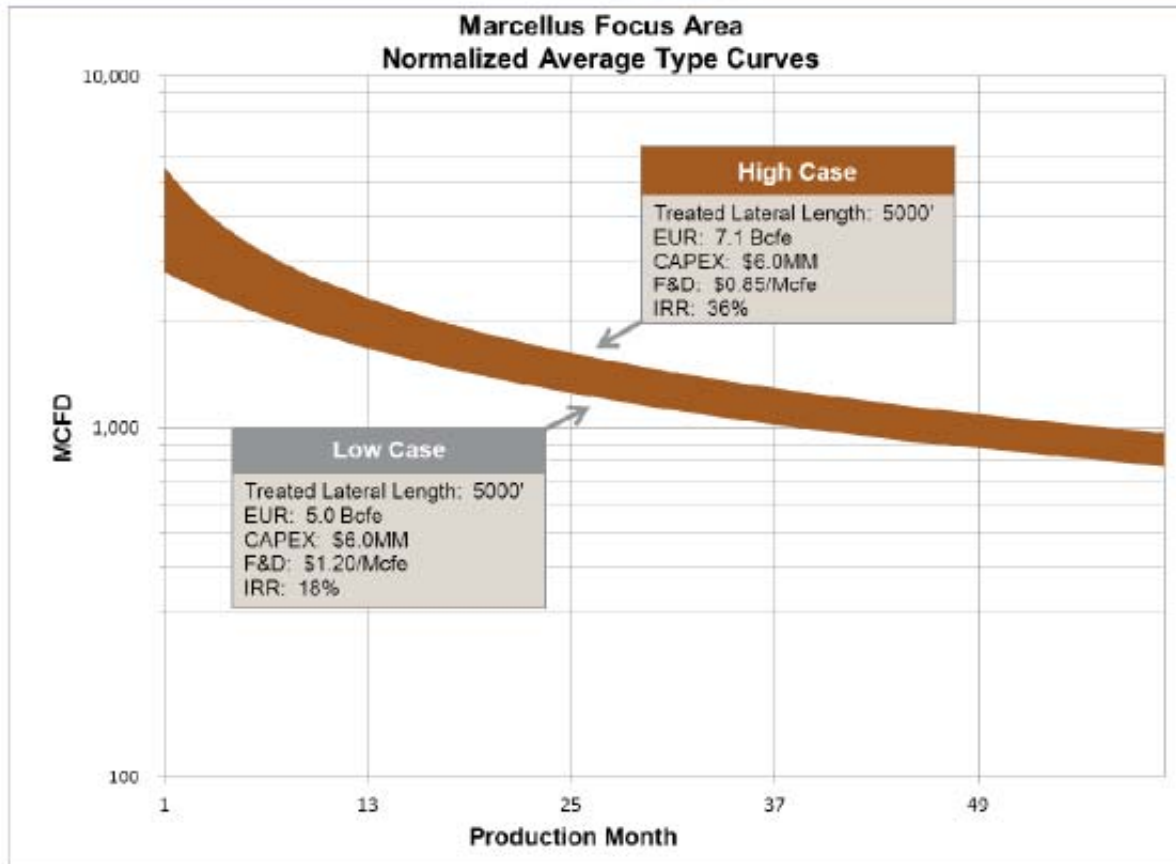
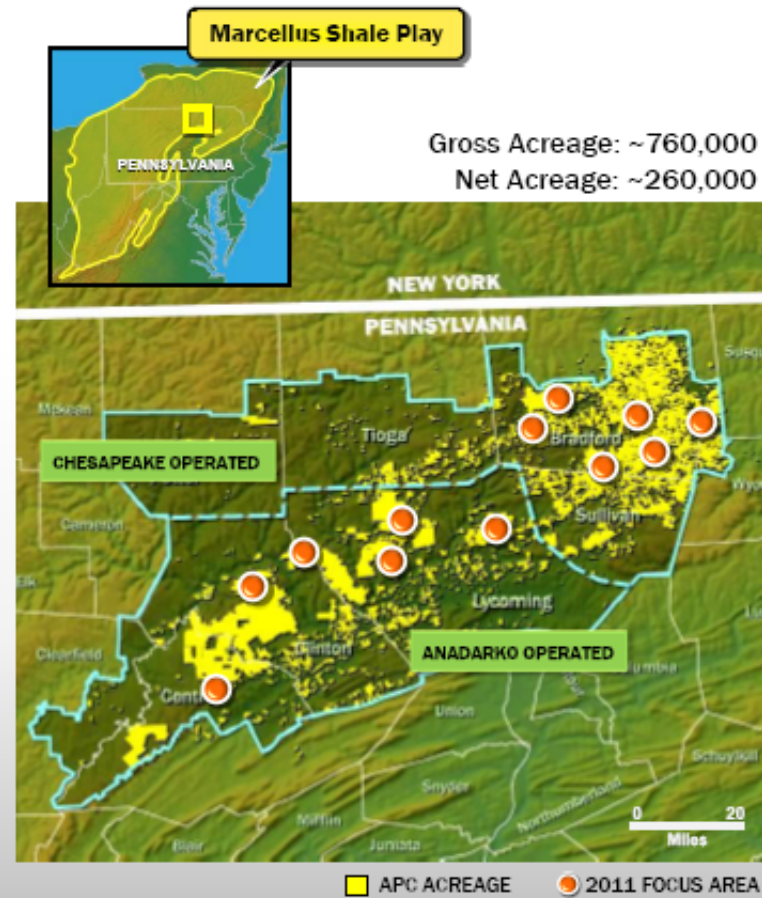
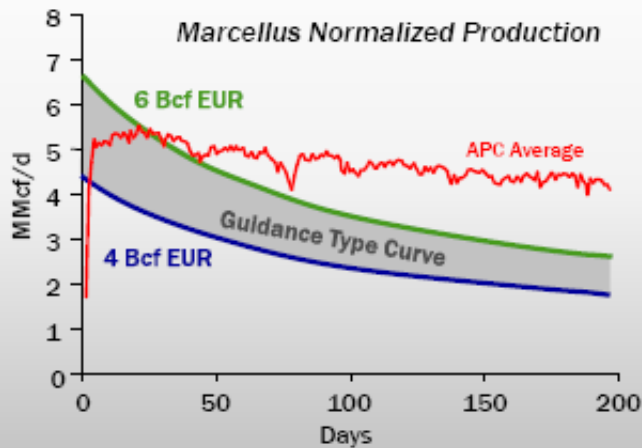


Marcellus Horizontal Economics



Marcellus Shale Growth Engine

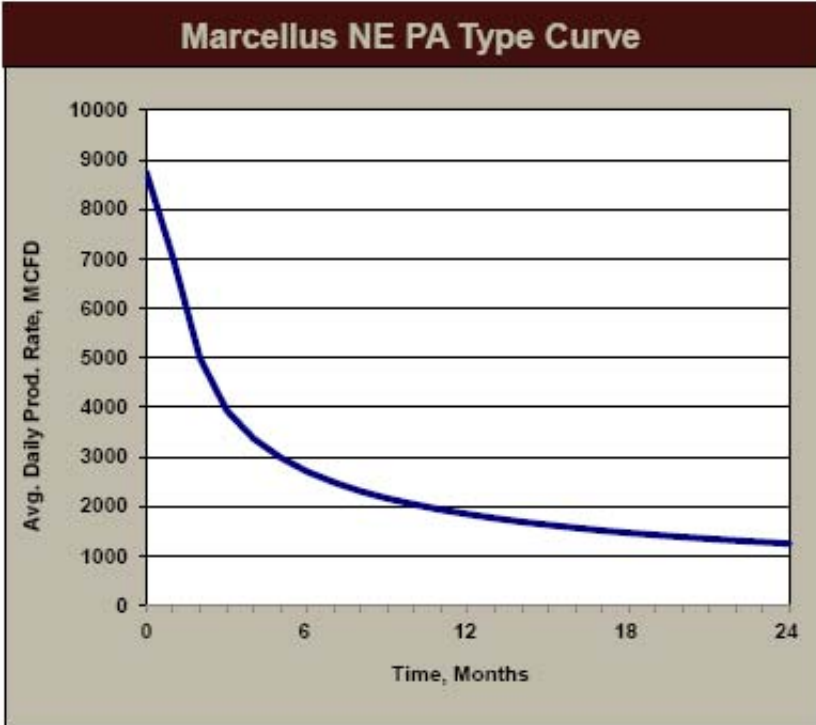
- **Significant Outperformance**
 - 1+ BBOE Net Risked Resources
 - Improving Average EURs
- **2011 Planned Activity**
 - 7+ Operated Rigs
 - Infrastructure Expansion



Marcellus Shale NE PA Economics

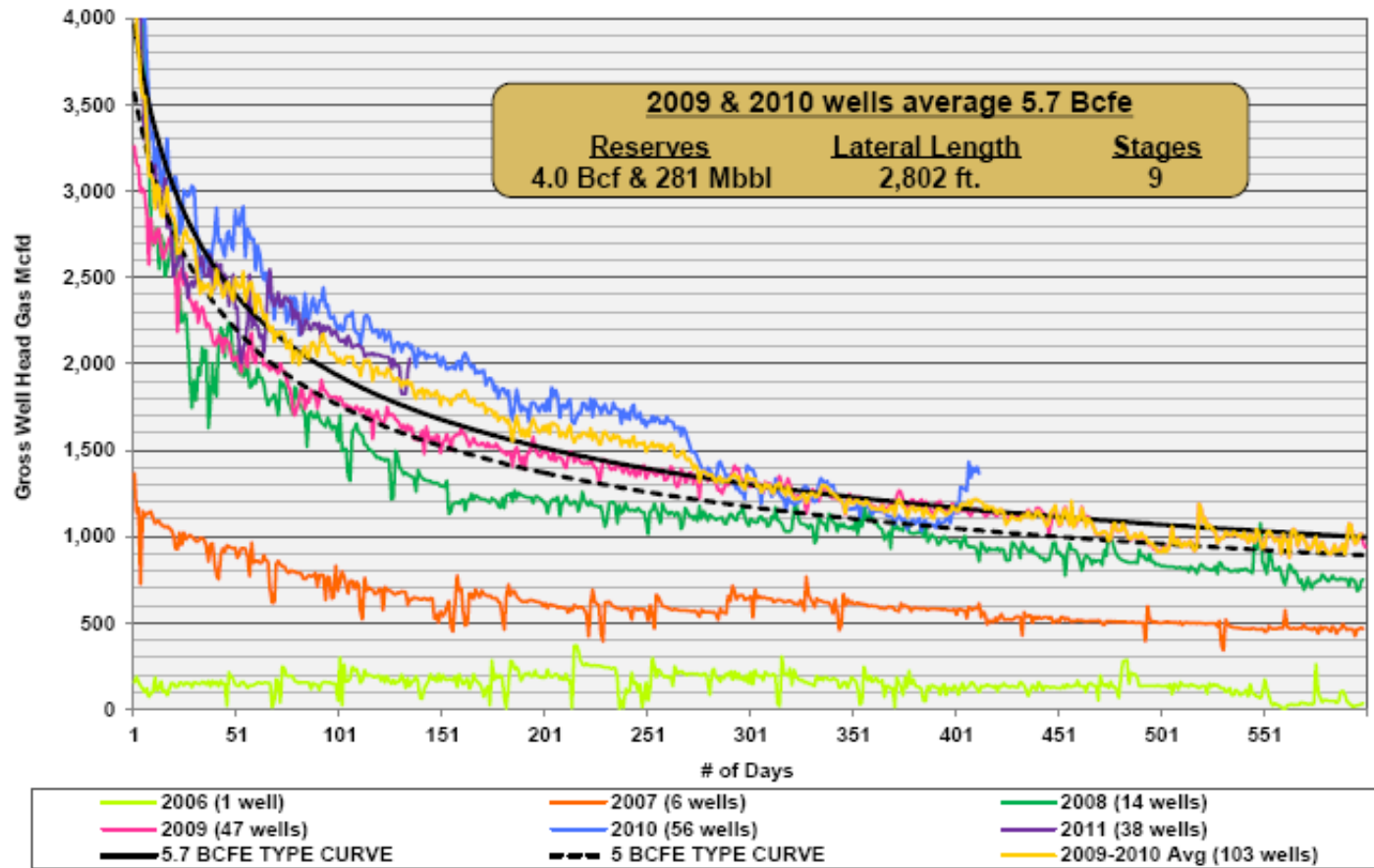


	<u>NE PA</u>
Total well cost	\$6.5 MM
Net Reserves	7.5 Bcf
F&D Cost	\$0.87 / Mcf
IRR - \$6.00 NYMEX	88%
\$5.00 NYMEX	53%
\$4.00 NYMEX	29%
Undiscounted Payback @ \$6 NYMEX (years)	1.8



Source: Internal estimates based on industry results.

SW PA Wet Area Marcellus Type Curve

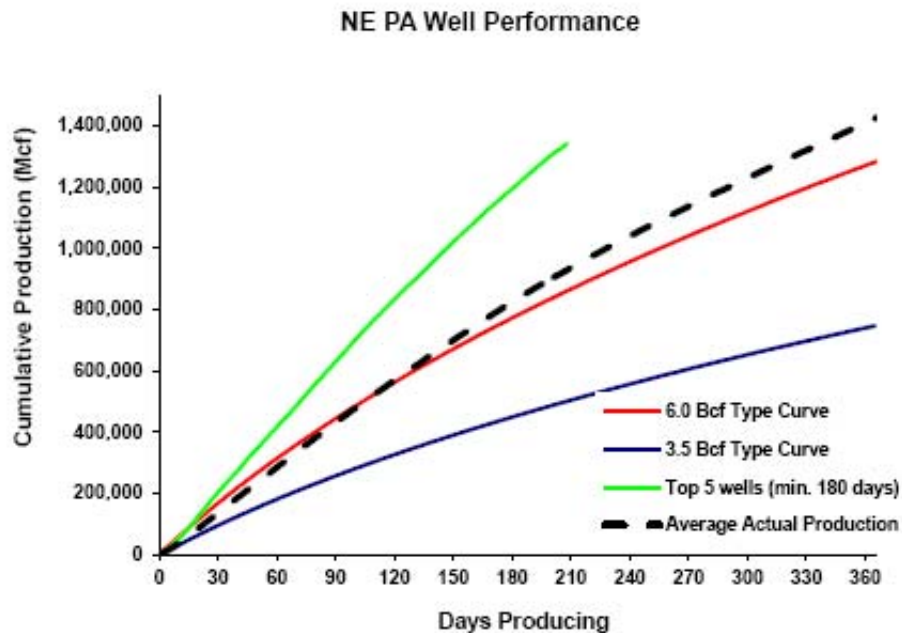


As of June 30, 2011



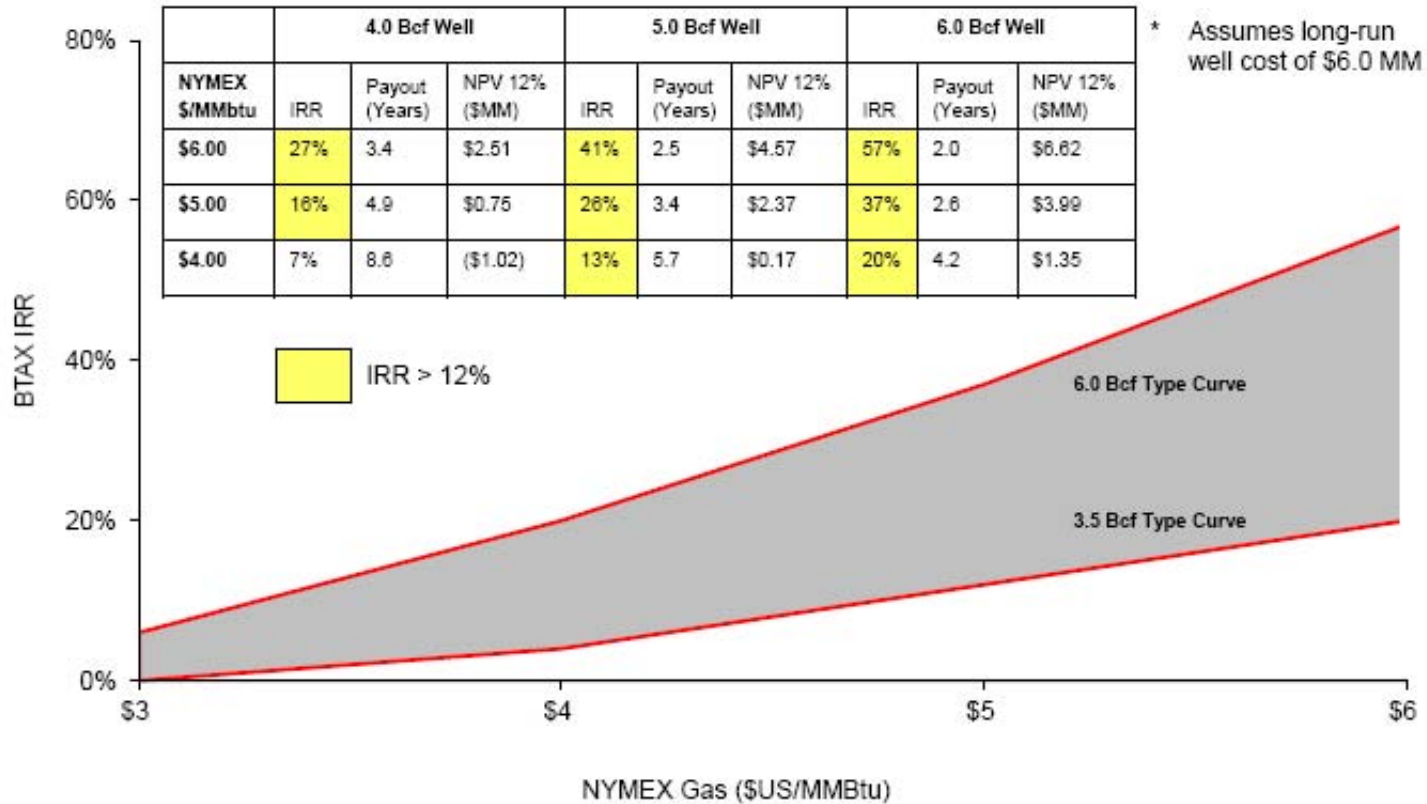
Improving Marcellus Performance

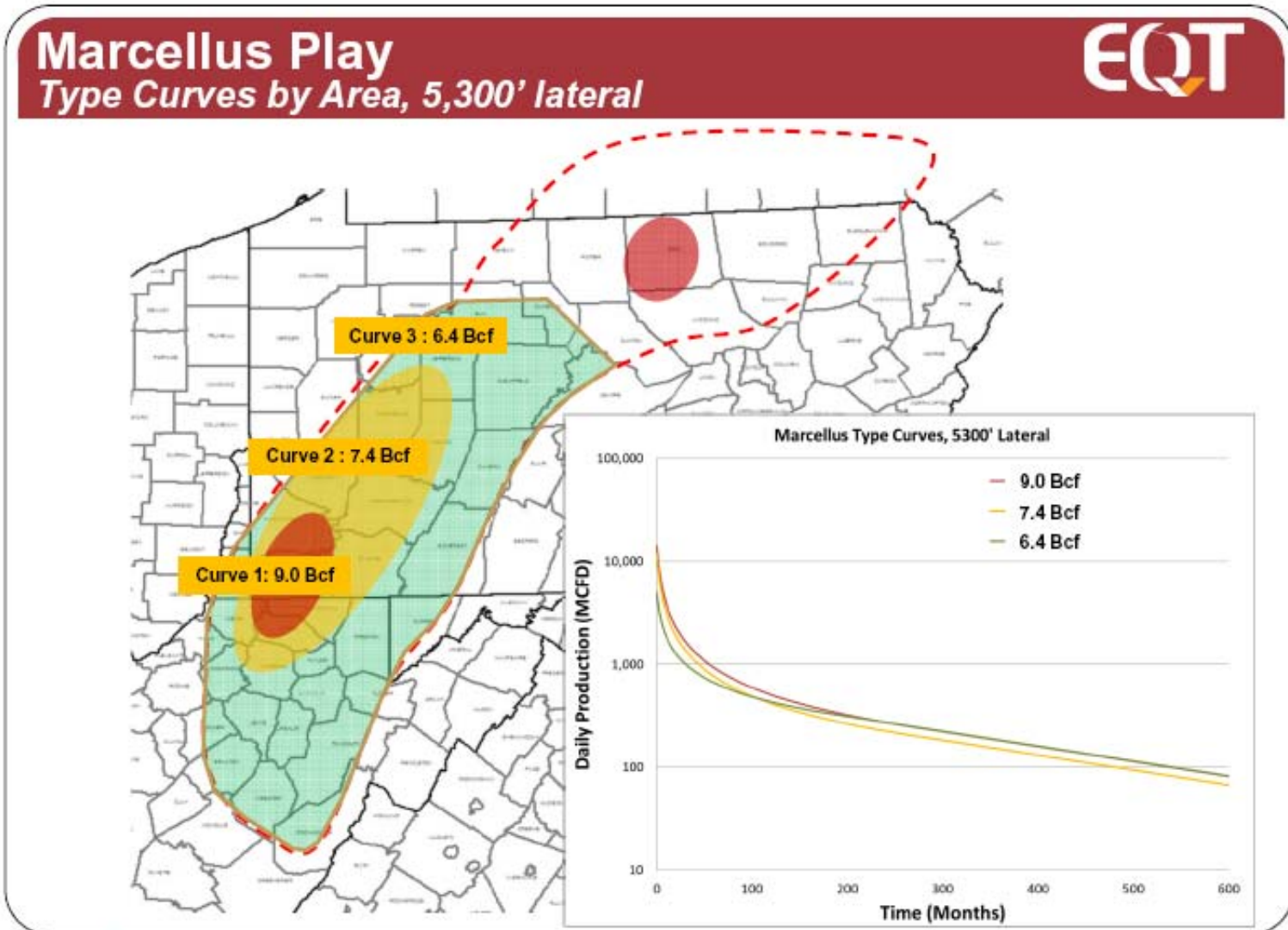
~90% of recent wells in the NE PA area are outperforming 6 Bcfe type curve



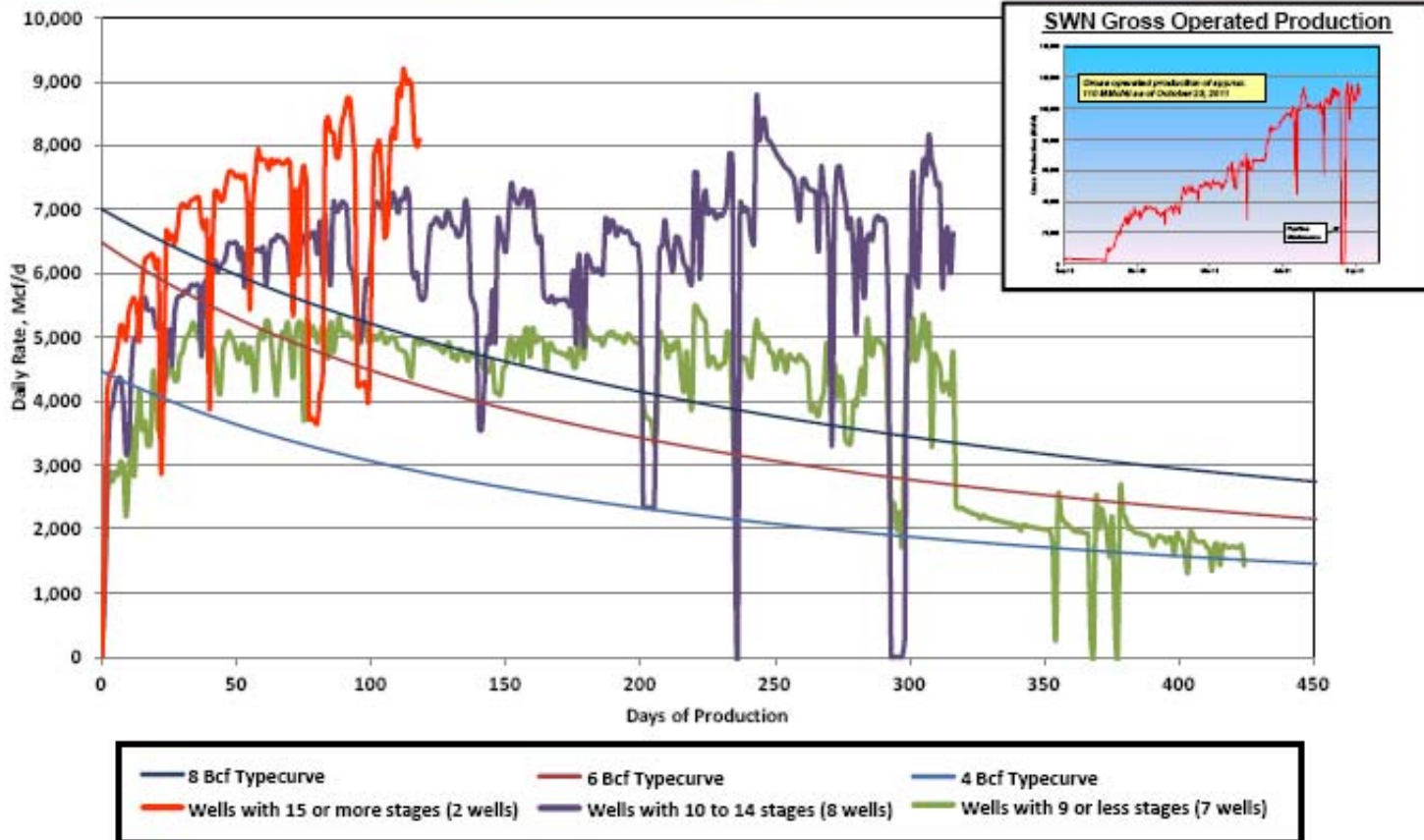
- Over 90 gross wells on production in NE Pennsylvania (Lycoming, Susquehanna and Bradford counties)
- Production of 19 MMcf/day net to Enerplus through October 2011
- 169 gross wells (12.5 net) waiting on completion or tie-in

Marcellus Well Economics





Marcellus Shale - Horizontal Well Performance



Total Well Count



$\frac{R^2}{A} \rightarrow V_f^2$

Marcellus Shale

EDA Typecurve – 6.7 Bcfe EUR (Greater Than 3,500' Lateral)

